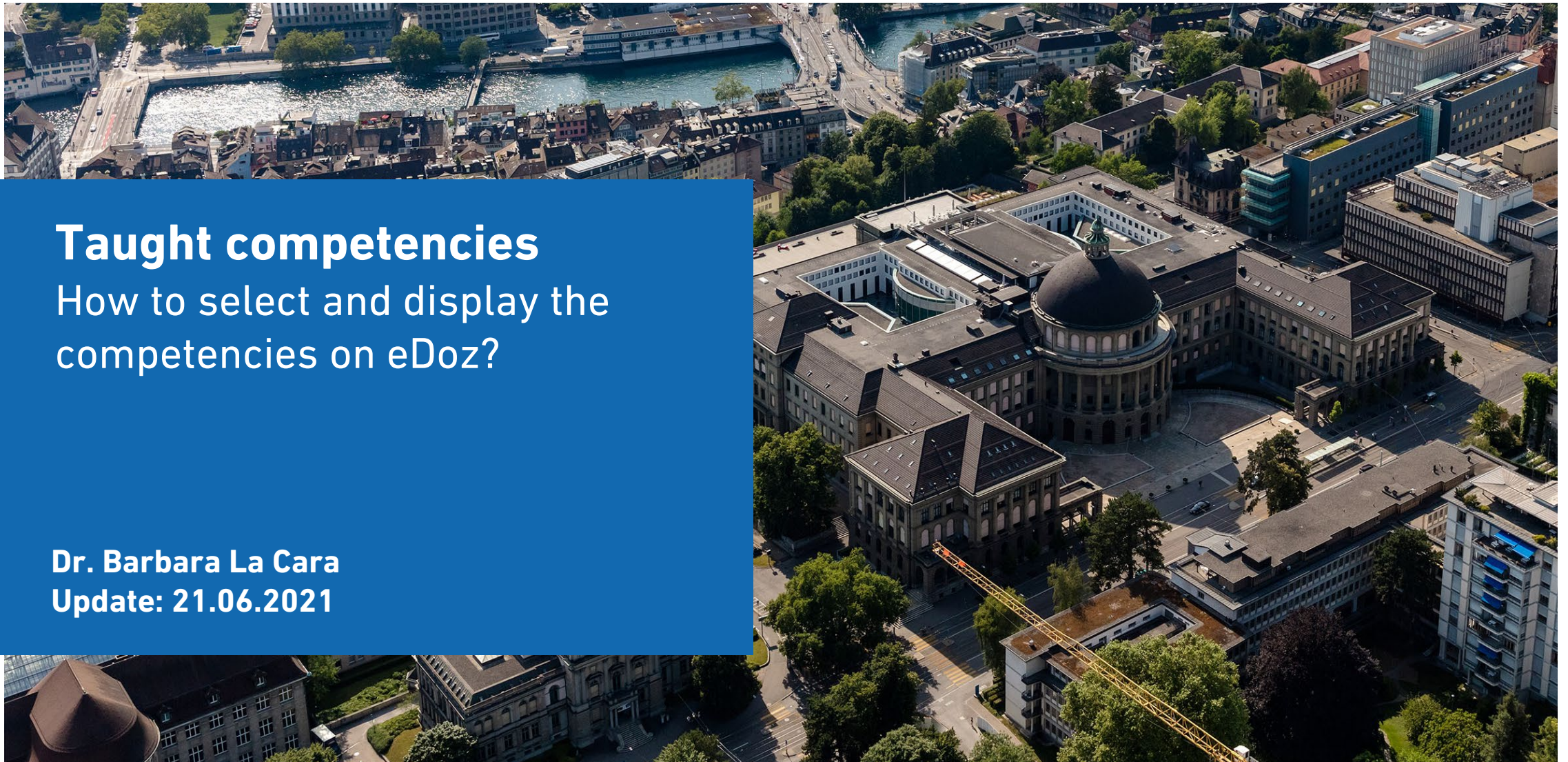


Taught competencies

How to select and display the competencies on eDoz?

Dr. Barbara La Cara
Update: 21.06.2021



Taught competencies on eDoz

Instructors can select the competencies that are taught in their course according to the **ETH Competence Framework**. The Competence Framework is a compilation of competencies that ETH Zurich aims to foster.

The Taught competencies function serves to make students aware of the competencies they foster at ETH. Over-representing competencies may create wrong expectations about your course.

Currently, this function is optional. If you nevertheless would like to select the competencies, you are welcome to do so. This tutorial will show you ***how to select and display the competencies of your course on eDoz*** in just 5 steps!

Before moving to the next slide, enter **eDoz**, select your course and go to **Scheduling > Catalogue Data** from the side menu.

To eDoz (English): <https://www.lehrbetrieb.ethz.ch/edoz/login.view?lang=en>

1) Start the revision of the Catalogue data

Click on **Edit** to change the catalogue data

Content	
Original language	
English translation	on a combination of lectures, case-based discussion, guest speakers, simulations and group work.
Lecture notes	
Original language	Slides will be available on the Moodle page
English translation	
Literature	
Original language	Readings will be available on the Moodle page
English translation	
Prerequisites Notice	
Original language	The course content and methods are designed for students with some background in management and/or economics
English translation	
Taught competencies	
Domain A - Subject-specific Competencies	
Domain B - Method-specific Competencies	
Domain C - Social Competencies	
Domain D - Personal Competencies	

[Edit](#) [Back](#)

2) Read more about the competencies

Taught competencies ⓘ

Domain A - Subject-specific Competencies
(Knowledge of theories, concepts, and techniques and its application to specific fields)

Domain B - Method-specific Competencies
(Knowledge and application of methods to make sense of, and operate in, any context)

Domain C - Social Competencies
(Competencies applied in the interaction with others)

Domain D - Personal Competencies
(Competencies concerning self-management in the context of own work)

Concepts and Theories	--	▼
Techniques and Technologies	--	▼
Analytical Competencies	--	▼
Decision-making	--	▼
Media and Digital Technologies	--	▼
Problem-solving	--	▼
Project Management	--	▼
Communication	--	▼
Cooperation and Teamwork	--	▼
Customer Orientation	--	▼
Leadership and Responsibility	--	▼
Self-presentation and Social Influence	--	▼
Sensitivity to Diversity	--	▼
Negotiation	--	▼
Adaptability and Flexibility	--	▼
Creative Thinking	--	▼
Critical Thinking	--	▼
Integrity and Work Ethics	--	▼
Self-awareness and Self-reflection	--	▼

Ability to break down procedures and systems into parts while understanding their interaction

**Not familiar with the competencies?
No problem, read more about it!**

You can visualize the definition of the competencies by moving the mouse cursor on each competency (see word balloon in the figure).

You can list a competency if at least one element among *knowledge, skills or attitude* related to this competency is fostered. Consult the full Competence Framework by clicking on the information button next to *Taught competencies*.

Taught competencies ⓘ

Domain A - Subject-specific Competencies
(Knowledge of theories

Detailed specification of competencies

3) Select the competencies

Taught competencies ⓘ

Domain A - Subject-specific Competencies (Knowledge of theories, concepts, and techniques and its application to specific fields)	Concepts and Theories	--	▼
	Techniques and Technologies	--	▼
Domain B - Method-specific Competencies (Knowledge and application of methods to make sense of, and operate in, any context)	Analytical Competencies	--	▼
	Decision-making	--	▼
	Media and Digital Technologies	--	▼
	Problem-solving	--	▼
	Project Management	--	▼
Domain C - Social Competencies (Competencies applied in the interaction with others)	Communication	--	▼
	Cooperation and Teamwork	--	▼
	Customer Orientation	--	▼
	Leadership and Responsibility	--	▼
	Self-presentation and Social Influence	--	▼
	Sensitivity to Diversity	--	▼
	Negotiation	--	▼
Domain D - Personal Competencies (Competencies concerning self-management in the context of own work)	Adaptability and Flexibility	--	▼
	Creative Thinking	--	▼
	Critical Thinking	--	▼
	Integrity and Work Ethics	--	▼
	Self-awareness and Self-reflection	--	▼

To select the competencies, consider the core deliverables of your course. Ask yourself what should students know more or be more able to do after attending your course or which attitudes would they learn by attending your course.

For each competency fostered, specify whether the competency is **assessed** (these competencies are included in a performance assessment either assessed as pass/fail or graded) or **not assessed** (fostered through exercises or in practice but not included in any formal assessment). Leave "--" for competencies that are **not taught** (these competencies will not be displayed on eDoz).

Note: The function serves to make students aware of the competencies they foster at ETH. Over-representing competencies may create wrong expectations about your course.

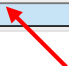
4) Save your revisions

It's done!

Scroll until the end of the page and click on **Save** to save your changes.

	project management	--	▼
Domain C - Social Competencies (Competencies applied in the interaction with others)	Communication	not assessed	▼
	Cooperation and Teamwork	--	▼
	Customer Orientation	--	▼
	Leadership and Responsibility	--	▼
	Self-presentation and Social Influence	--	▼
	Sensitivity to Diversity	--	▼
	Negotiation	--	▼
	Domain D - Personal Competencies (Competencies concerning self-management in the context of own work)	Adaptability and Flexibility	--
Creative Thinking		--	▼
Critical Thinking		--	▼
Integrity and Work Ethics		--	▼
Self-awareness and Self-reflection		--	▼
Self-direction and Self-management		--	▼

Save Reset Cancel



5) Enjoy your preview

Content	
Original language	
English translation	
Lecture notes	
Original language	Slides will be available on the Moodle page
English translation	
Literature	
Original language	Readings will be available on the Moodle page
English translation	
Prerequisites Notice	
Original language	The course content and methods are designed for students with some background in management and/or economics
English translation	
Taught competencies	
Domain A - Subject-specific Competencies	Concepts and Theories <i>assessed</i>
Domain B - Method-specific Competencies	Analytical Competencies <i>assessed</i>
Domain C - Social Competencies	Communication <i>not assessed</i>
Domain D - Personal Competencies	
<input type="button" value="Edit"/>	<input type="button" value="Back"/>

After saving your changes, you will be able to see a preview of the competencies fostered in the course.

Students will be able to see only the Taught competencies as they navigate the Course Catalogue. The competencies that are not taught will not be displayed.